

Volume

1

 millennium
accounting solutions

Arena
MAS200
Integration

THIS CUSTOM PROGRAM INCLUDES AN ADAPTER THAT INTEGRATES THE ARENA BILL OF MATERIAL AND ITS COMPONENT(S) WITH THE ITEM AND BOM MASTER FILES IN MAS90/MAS200

MILLENNIUM ACCOUNTING SOLUTIONS

Program Guide

Copy Rights

© Millennium Accounting Solutions
1625 West Campbell Ave
Campbell, CA 95008
Phone 408-370-0656 • Fax 408-364-2810
www.mas-llc.com

Table of Contents

Introduction	i		
CHAPTER 1		CHAPTER 2	
MAS200 Adapter	1	MAS200-Arena Application Requirements	2
CHAPTER 3		CHAPTER 4	
Data Source & Fields	3-4	Folder Organization	5-13
CHAPTER 5		CHAPTER 6	
Schedule Tasks	14-16	Hardware / Software Configuration	17

MAS200 Adapter

This adapter monitors the designated folder in the MAS200 server (C:\ArenaERPEXchange\erpx_prod\downloads) for any new data source generated by the Arena ERP Output Adapter. It compares the data contained in the data source generated by Arena with the MAS200 Item/BOM master files. If new Item(s)/BOM(s) are created in Arena with a valid Product Line, it transfers the new Item(s)/BOM(s) to MAS200 automatically. If the Item(s) already exists in MAS200, it updates the Item Master file with the new properties of the item(s) contained in the data source. If an existing BOM with a new Revision is contained in the data source, it adds the new BOM Revision to the BOM Master file in MAS200.

In addition, the MAS200 Adapter updates the Item Vendor File in MAS200 for up to three manufacturers and three suppliers if the valid Vendor Numbers are included in the Arena data source file.

Finally, the adapter generates and emails a log file to the end user that contains the detail for each ITEM/BOM that was updated in MAS200.

All of this takes place seamlessly without the user(s) intervention.

This program resides in the MAS200 Server which can be installed on any of the following operating system versions:

- MS Windows 2000 Server with Service Pack 4
- MS Windows 2003 Server with Service Pack 2
- MS Windows 2008 Server with Service Pack2

MAS90/MAS200 Requirements

The VI Module must be installed as part of MAS200 installation. All versions of MAS200 3.71 and above are supported. There is a substantial change to the MAS90/MAS200 version 4.40. All other versions are similar installation. There are no modifications to the MAS200 application program source codes. There are 9 VI jobs that are run during the updates automatically. The VI job logs are converted to text and are emailed in a group to the end user.

Arena Requirements

The Arena Professional Version does not have the ERP Output Adapter included. It must be purchased separately.

The Arena Enterprise Version includes the ERP Output Adapter and it does not have to be purchased separately.

Data Source and data fields from Arena

The Arena ERP Output Adapter creates a data set and saves this in a data source file anytime a new item/bom is created, a bom is revised, or changes are made to item properties. The data source file generated by Arena is stored in:

C:\ERPEXchange\erpx_prod\downloads

The Arena-MAS200 Integration Adapter program parses the data source file from Arena and creates a new data source file to be imported to MAS200. The VI automated jobs process the data source, updates the current version of BOMs, and creates the job log files to be emailed to the end user.

Finally, the MAS200 Adapter sends email notification to the end user with the VI job logs attached.

The process for the above steps is orchestrated by series of Windows Schedule Tasks that are scheduled to run sequentially.

Below is a list of data fields that are transferred from Arena to MAS200 for each appropriate Master File:

Item Master File-

Item_Number

Description

CategoryX (X is 1 thru 4)

Product_line

Valuation (if different than default from P/L)

Prim_Vendor_no

BOM Master File-

Bill_Number

Bill_Revision

Descrip_1

Current_Rev

Item_Code

Qty_per_Bill

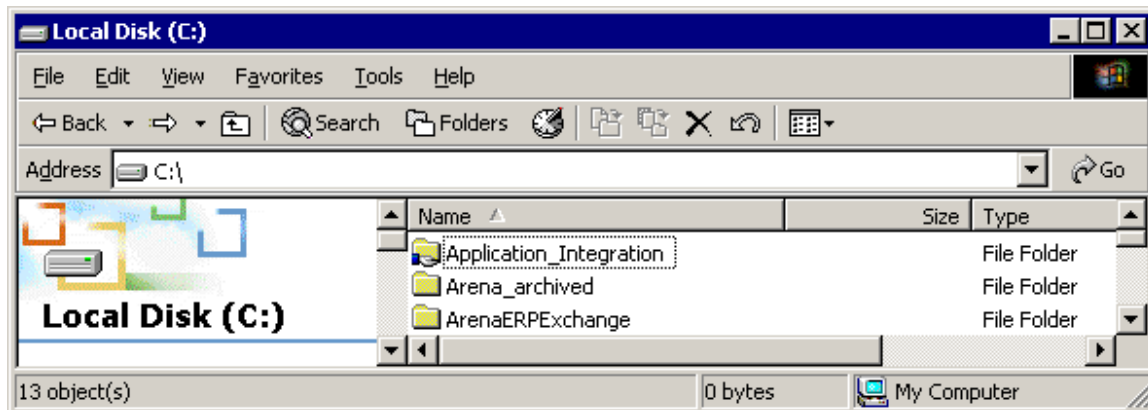
Item Vendor File-

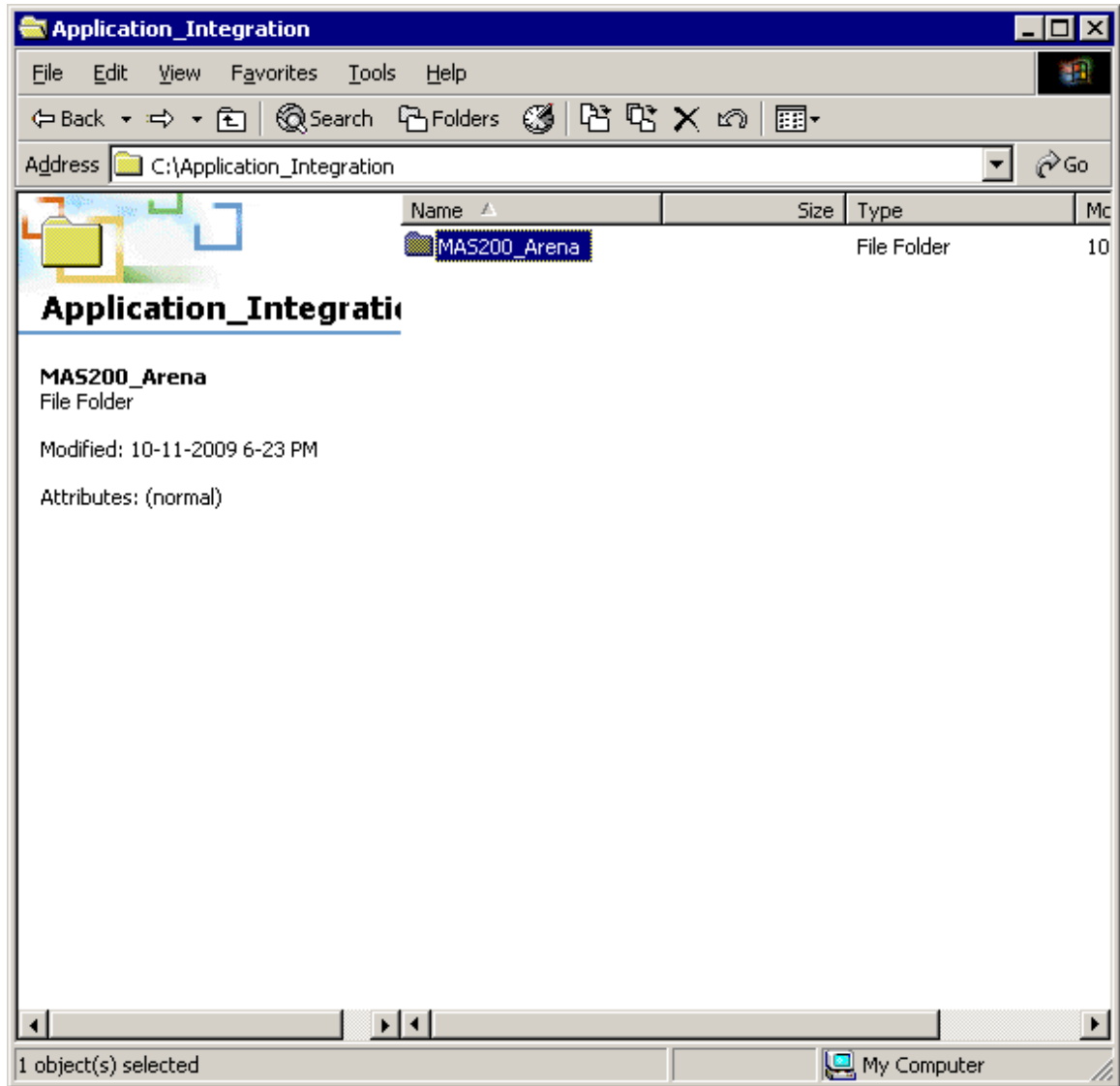
Item_Number

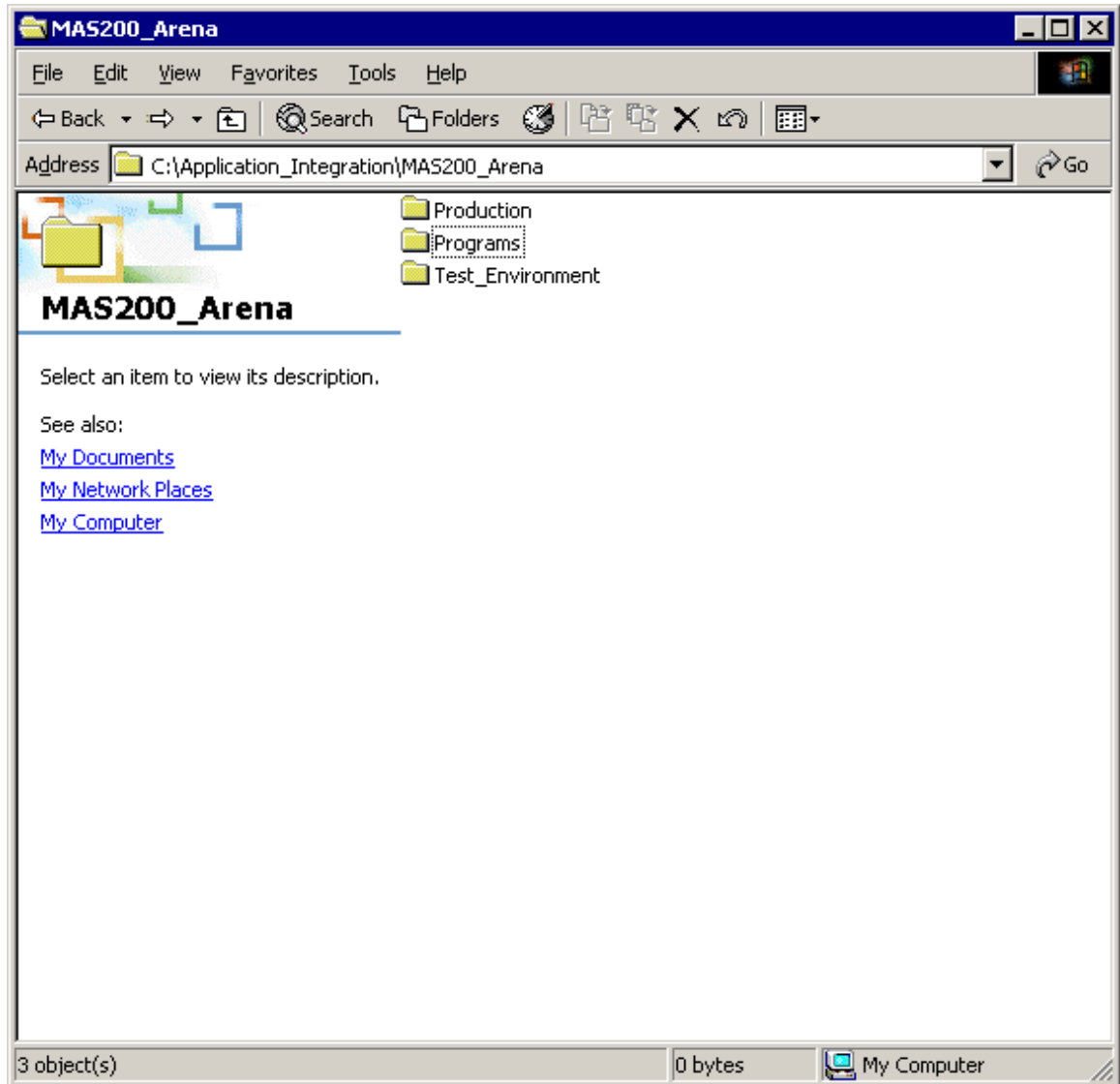
Vendor_No

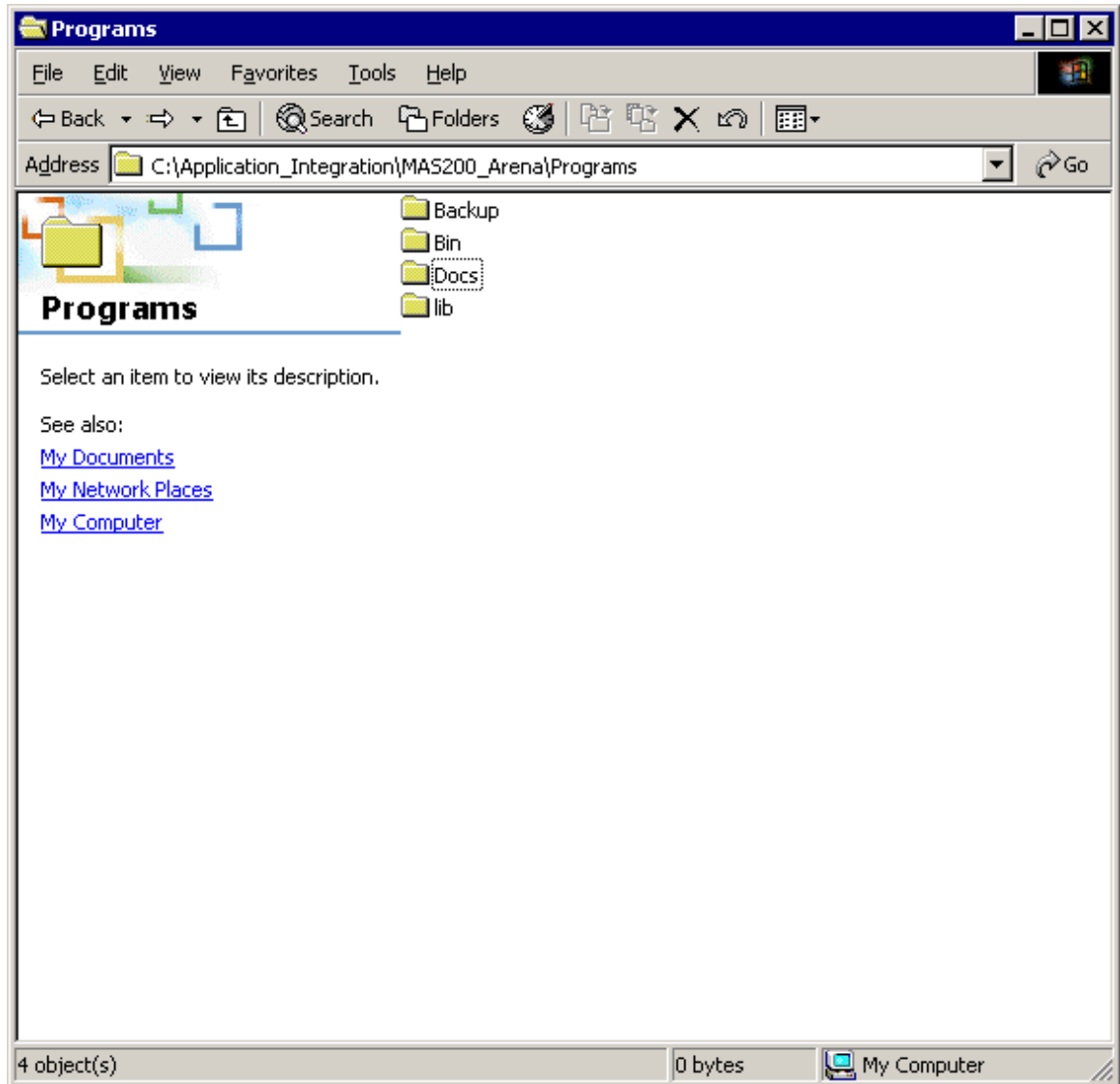
Vendor_Part_No

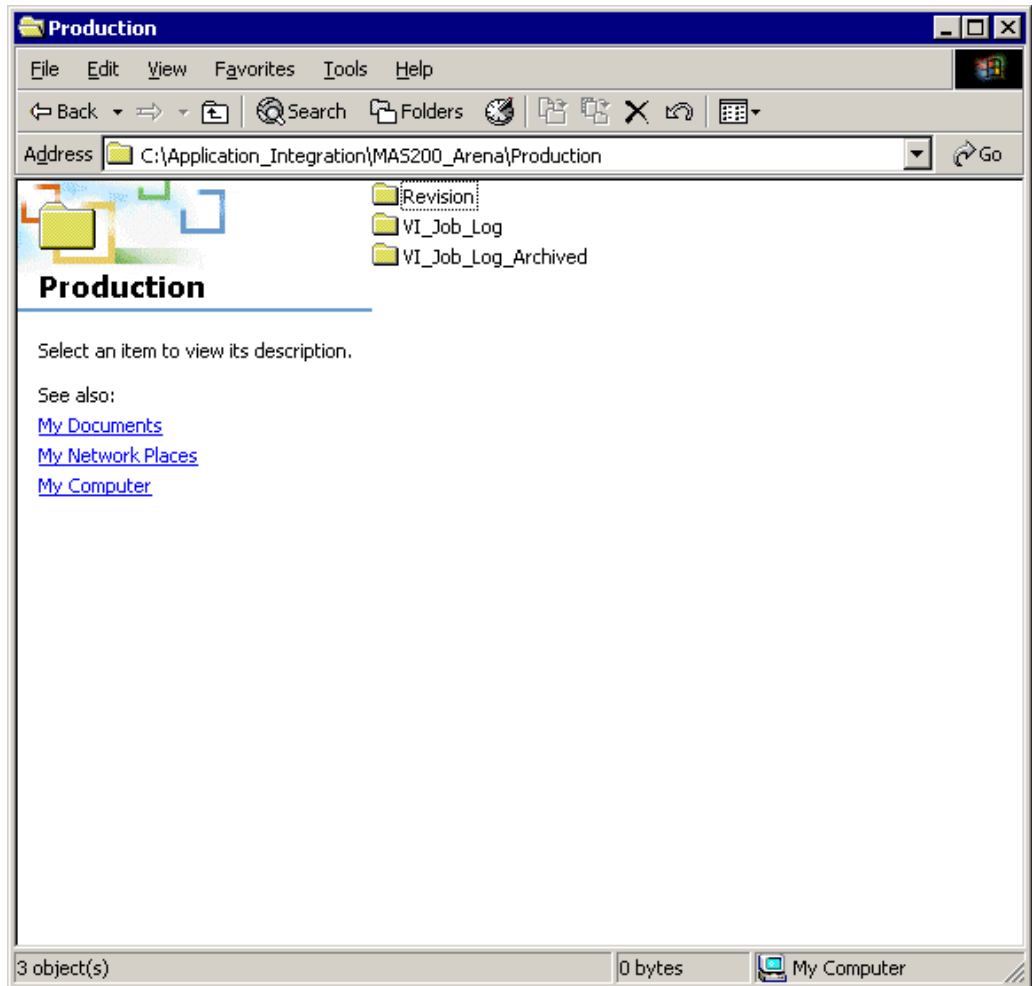
Folder Organization

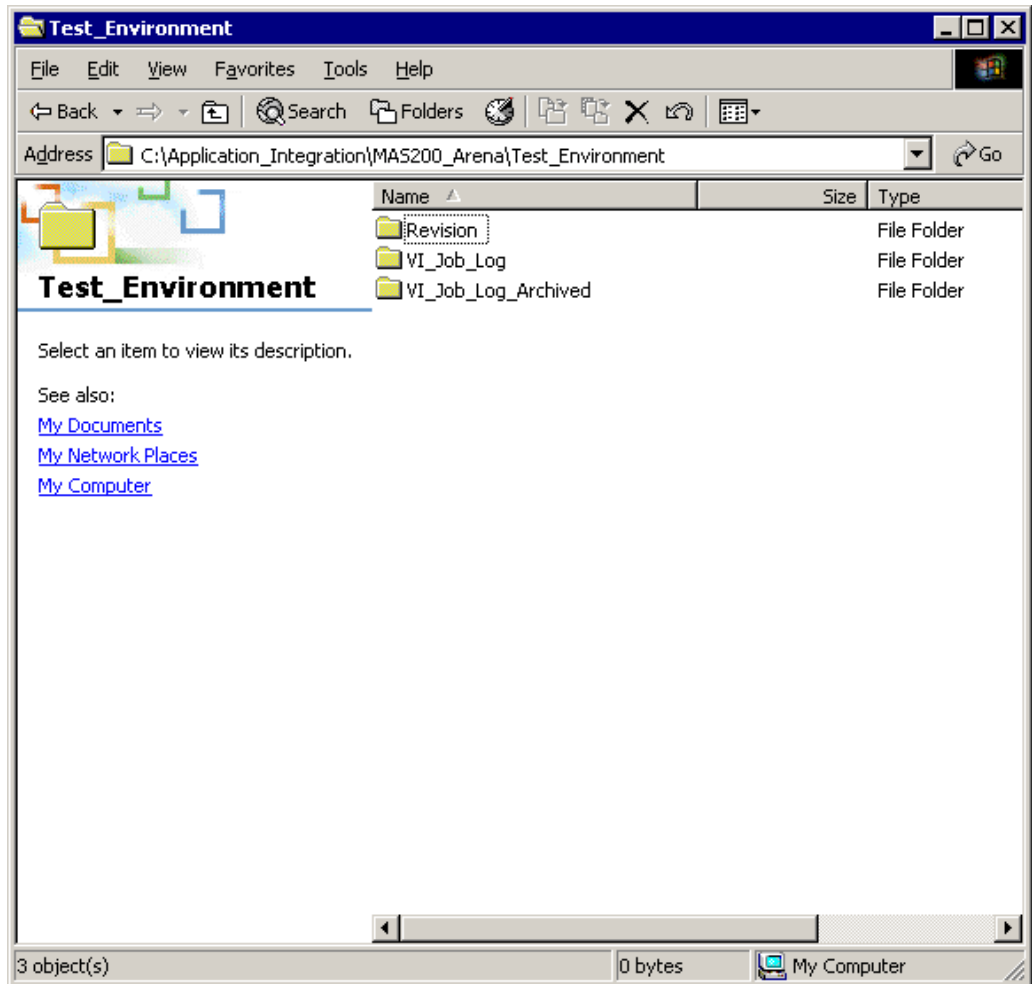


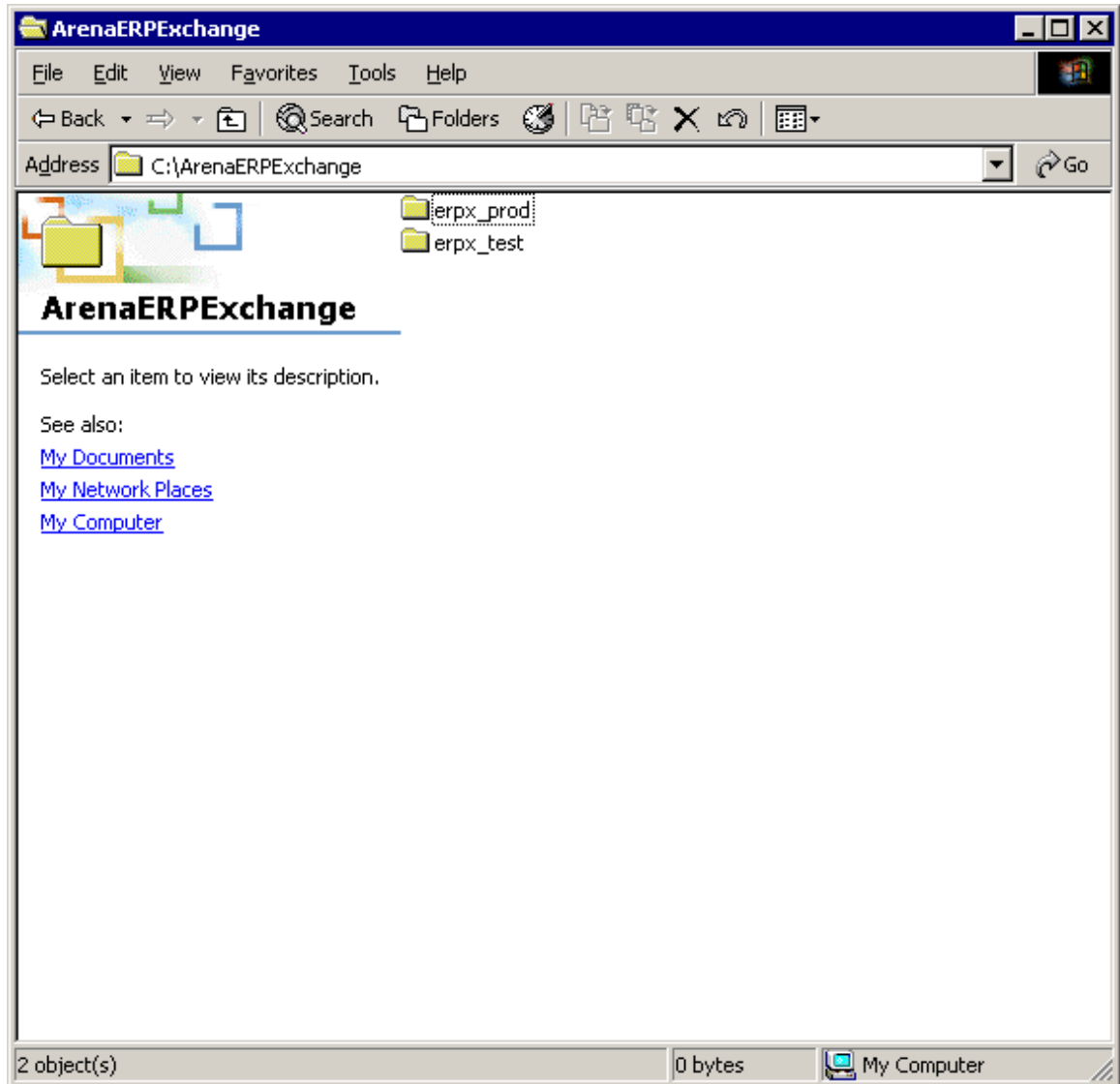


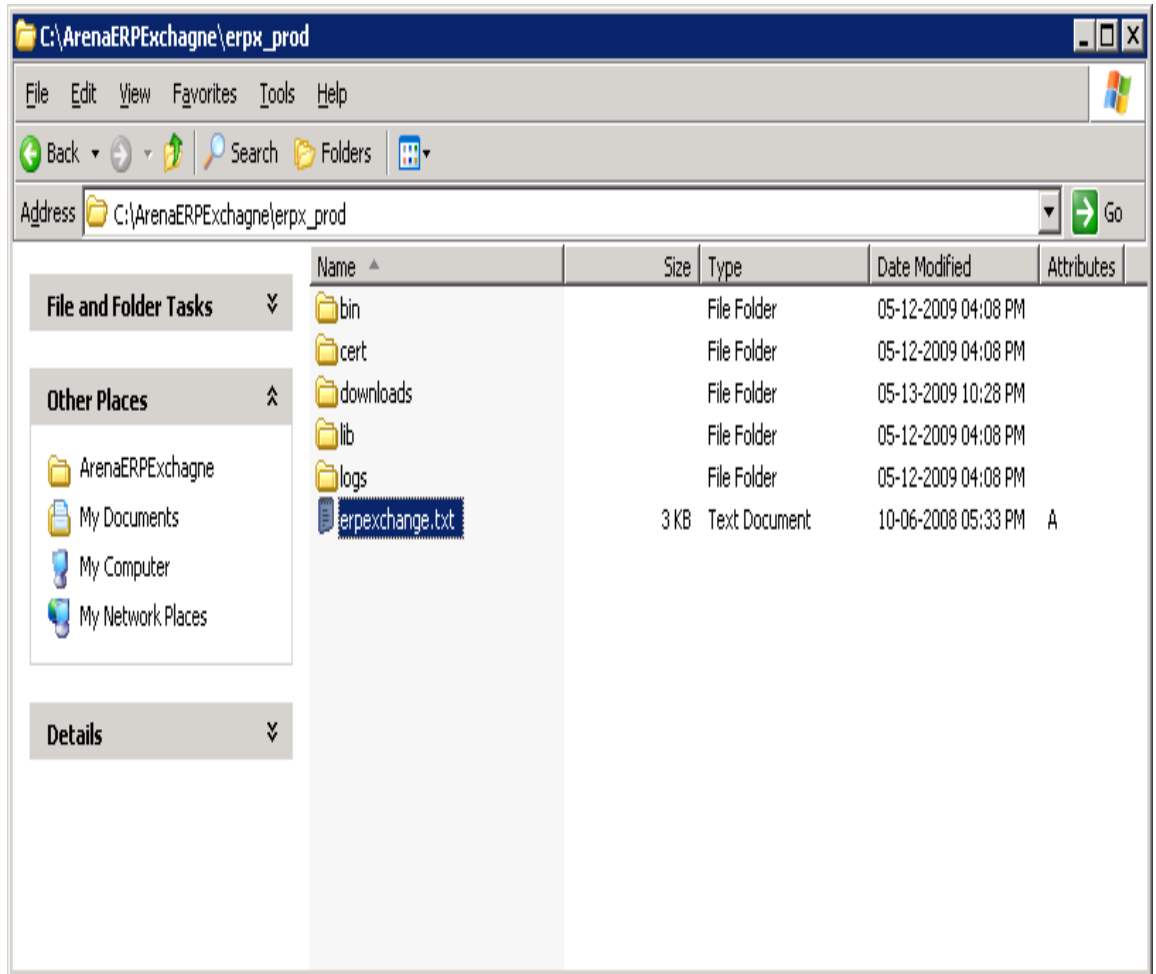


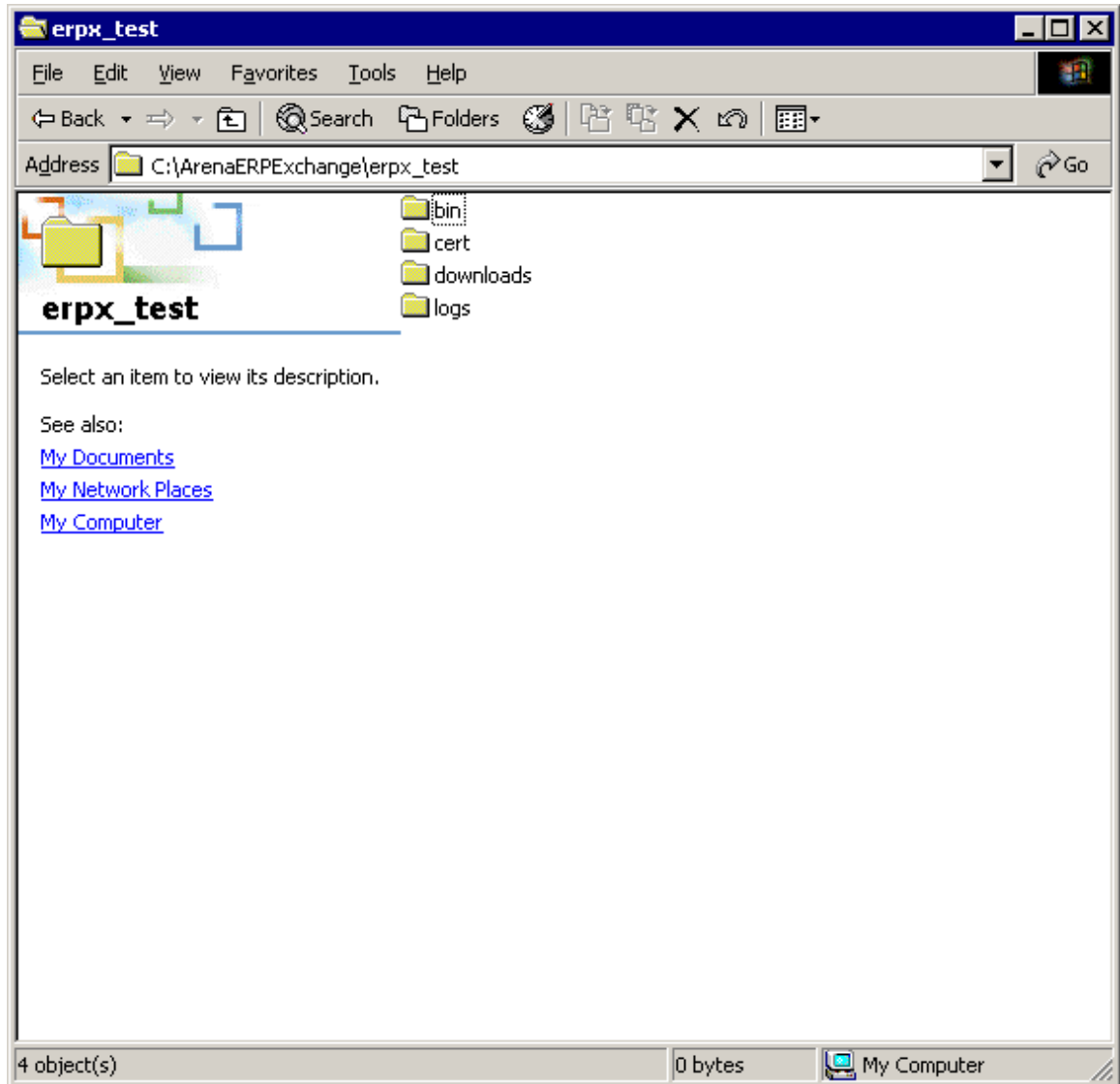




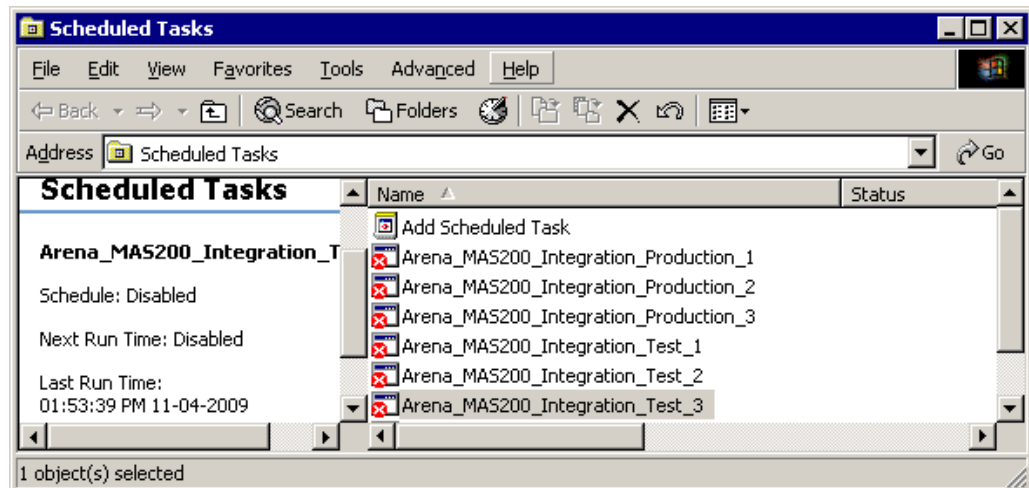








Schedule Tasks



Production Schedules (1 through 3):

Arena_MAS200_Integration_Production_1
 Arena_MAS200_Integration_Production_2
 Arena_MAS200_Integration_Production_3

Schedule 1

C:\ArenaERPExchange\erpx_prod\downloads\Removefile_Production.cmd
 C:\ArenaERPExchange\erpx_prod\downloads

This task belongs to series of tasks that runs first. This task moves, renames, and archives the *.csv files that are dropped by the Arena ERP Exchange into the download folder. It also prepares the data source for import to MAS and then imports it to MAS.

Schedule 2

C:\Application_Integration\MAS200_Arena\Programs\Bin\VI_Job_Log_Production.cmd
 C:\Application_Integration\MAS200_Arena\Programs\Bin

This task belongs to a series of tasks that runs after the Arena_MAS200_Integration_Production_1 task. This task prepares the data source for updating Current BOM Revisions & the text version of VI Job Logs. It also emails the VI Job Logs.

Schedule 3

C:\Application_Integration\MAS200_Arena\Programs\Bin\Update_Cur_Rev_Prod.CMD

C:\Application_Integration\MAS200_Arena\Programs\Bin

This task belongs to a series of tasks that runs last. This task updates all the existing BOM Current Revision Field with the latest BOM Revisions.

Test Schedules (1 through 3):

Arena_MAS200_Integration_Test_1

Arena_MAS200_Integration_Test_2

Arena_MAS200_Integration_Test_3

Schedule 1

C:\ArenaERPExchange\erpx_test\downloads\Removefile_test.cmd

C:\ArenaERPExchange\erpx_Test\downloads

This task belongs to series of tasks that runs first. This task moves, renames, and archives the *.csv files that are dropped by the Arena ERP Exchange into the download folder. It also prepares the data source for import to MAS and then imports it to MAS.

Schedule 2

C:\Application_Integration\MAS200_Arena\programs\lib\VI_Logs_Mail_Test.vbs

C:\Application_Integration\MAS200_Arena\programs

This task belongs to a series of tasks that runs after the Arena_MAS200_Integration_Test_1 task. This task prepares the data source for updating Current BOM Revisions & the text version of VI Job Logs. It also emails the VI Job Logs.

Schedule 3

C:\Application_Integration\MAS200_Arena\Programs\Bin\Update_Cur_Rev_T
ST.CMD

C:\Application_Integration\MAS200_Arena\Programs\Bin

This task belongs to a series of tasks that runs last. This task updates all the existing BOM Current Revision Field with the latest BOM Revision.

